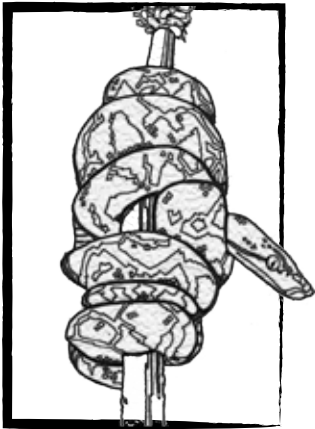
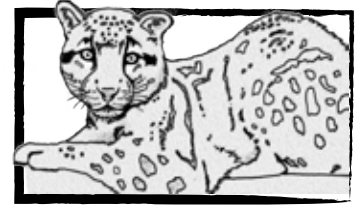


The Greatest Biodiversity on Earth

Symbiotic



RETICULATED PYTHON



CLOUDED LEOPARD

SUN BEAR



PITCHER PLANTS

Disperse

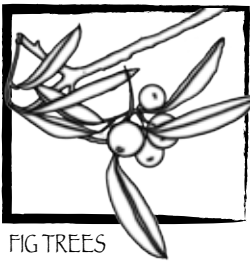


FIG TREES

Mutualistic

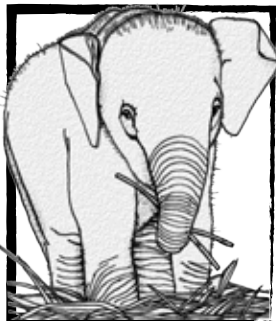


ORANGUTANS



TUALONG TREE

Biodiversity is the variety of life in the world. The Earth's biodiversity is estimated at about 14 million species and at least half of them are found only in tropical rain forests. The island of Borneo is one of the most biodiverse areas on Earth. Each species has a profound impact on another. For example, sun bears eat over 50 different types of plants and play an important role by dispersing fruit seeds as they scatter them about in their droppings. Sun bears also protect trees by consuming termites. When termites take over a living tree host they often kill the tree and by controlling the termite population sun bears help to ensure a thriving forest. Define the words on the page. Draw lines that connect one species to another and then explain how these two species might share a relationship.

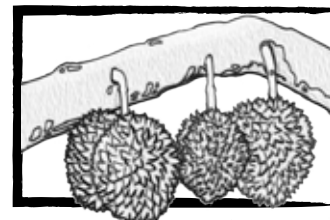


PYGMY ELEPHANTS

Ecosystem



RHINOCEROS HORNBILL



DURIAN

Balance



RAIN FOREST LEAVES

